

Don't Throw It Away - Can it be Reused/Recycled?

Blue barrel and green barrel service has resumed. Learn about [accepted recyclable items](#). Also, our Environmental Management & Sustainability director recently provided an update on the challenges currently impacting the recycling industry. Check out the [full interview](#).

Recycle Right Wizard – this is such a fun tool. Just type in the waste material you're wondering about. The Wizard will tell you if an item is or is not recyclable. Better than that, it will also advise you of additional safe and appropriate options for disposal.



Mesa's household hazardous materials facility. Our facility is open Wed-Sat from



7 a.m. to noon (closed Fri, Dec 25 and Fri. Jan 1). For the safety of customers and staff, temporary drop-off rules are in effect. Items accepted include paint, automotive fluids, propane tanks, chemicals, appliances, electronics, and more. The link provides the location and all the details.

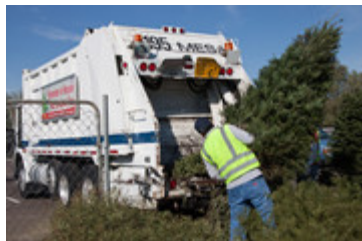
ER2 (Electronic Responsible Recyclers) and REVIVE IT store at 730 E. Southern is a

full-service electronic recycler - offering secure data destruction and zero-landfill impact - where they refurbish and remarket usable electronics and recycle end-of-life equipment. Individuals can drop off items (electronics only – not appliances) at the retail store. They will only charge for drop offs of DLP or CRT TV's and monitors. Don't miss their retail store for great deals on TVs, computers and more! Oh, and they do repairs as well.



Goodwill Donation Centers accept all items that are in working condition, contain all of their pieces and parts, and are free of stains and rips. This is the best way to ensure that your used items do the most good. If you have never dropped donations off, they couldn't make it any easier. Just drive through. Sites are located throughout Mesa. Don't forget to shop there, too.

Stardust Building Supplies- Mesa located at 1720 W. Broadway. This non-profit operates two reuse centers for home improvement that sell gently used, salvaged, and surplus building materials at affordable prices. Additionally, they provide deconstruction services that salvage building materials, divert waste from landfills, and support sustainability in the community. They accept working appliances, cabinets, plumbing, hardware, lighting and electrical, and more.



TREE-CYCLE! ARE YOU DONE WITH THE HOLIDAYS ON DECEMBER 26? No worries. Mesa's Christmas Tree Recycling Program starts on Dec. 26 and runs through Jan. 17. You can "Treecycle" by bringing your tree to free drop-off locations. Collected trees are taken to the Salt River Landfill and chipped into nutrient-rich mulch.

Earth911: If you have an unusual item like old carpeting, check into this site for listings of companies in the area that may accept them.